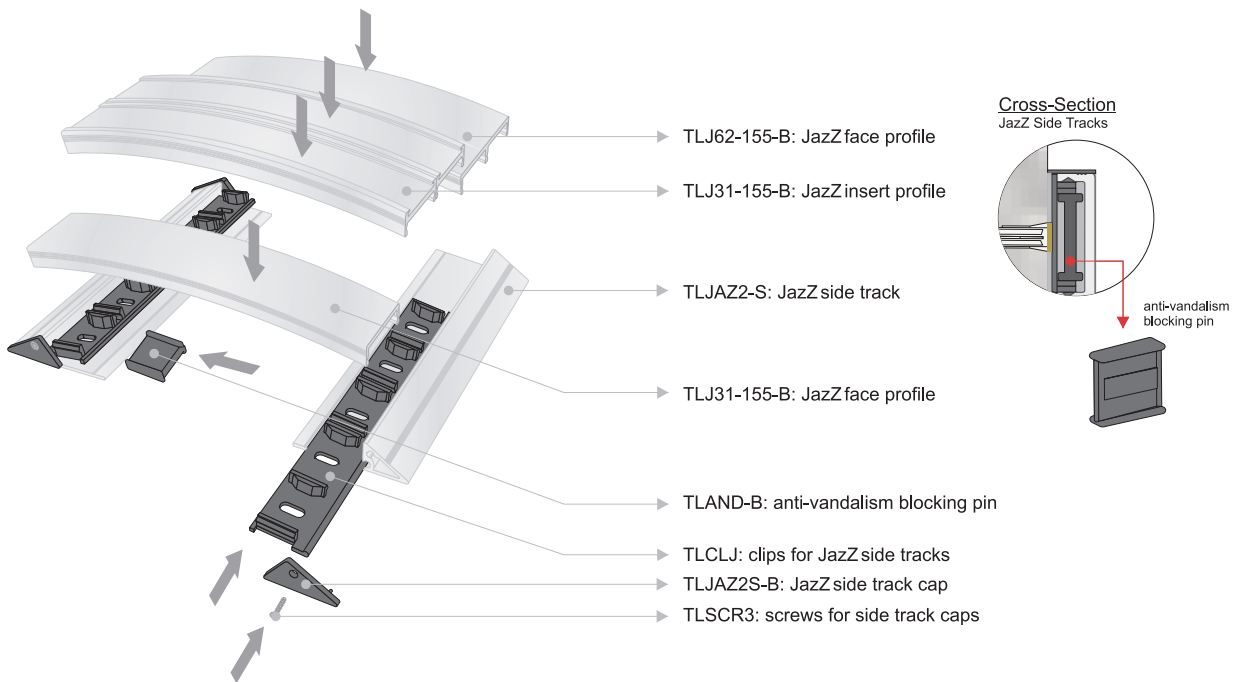




CLEARPATH[®]
SIGNAGE SYSTEMS

JazZ[™]

triangle side tracks capped



End Caps
Standard Colors
- Black
- Grey

- 1 Screws and drywall anchors
- 2 Double Sided VHB tape
- 3 Glue

Mounting Possibilities
Wall Applications
Note: Glue and Tape are for indoor applications only.



Triline Key
Unlock profiles from their clips. Profiles cannot be removed without the key.

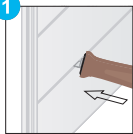
assembly instructions



DeSign® Classic Side Tracks Capped Wall Frame

Insert & Face Profile Removal Instructions

1



Slide the Triline key horizontally between the profiles at a minimum distance of 1.97" (50 mm) from the side tracks.

2



Pull the key backwards. The profile is now released from the clips and can be removed from the sign.

Face Profiles		
Item Code	Profile Height	Profile Thickness
TL31-S	1.22" 31 mm	0.06" 1.5 mm
TL62-S	2.44" 62 mm	0.06" 1.5 mm
TL93-S	3.66" 93 mm	0.06" 1.5 mm
TL124-S	4.88" 124 mm	0.08" 2.03 mm
TL155-S	6.10" 155 mm	0.08" 2.03 mm
TL186-S	7.32" 186 mm	0.10" 2.54 mm
TL217-S	8.54" 217 mm	0.12" 3.05 mm
TL248-S	9.76" 248 mm	0.12" 3.05 mm

Insert Profiles		
Item Code	Profile Height	Material Height
TL31S-S	1.22" 31 mm	1.04" 26.5 mm
TL62S-S	2.44" 62 mm	2.24" 56.5 mm
TL93S-S	3.66" 93 mm	3.50" 88.5 mm
TL124S-S	4.88" 124 mm	4.72" 119.5 mm
TL155S-S	6.10" 155 mm	5.94" 150.5 mm
TL186S-S	7.32" 186 mm	7.16" 181.5 mm
TL217S-S	8.54" 217 mm	8.38" 212.5 mm

The insert profiles accept any flexible material (engrivable plastic, acrylic, digitally printed materials, clear lens, etc.) with a thickness up to 1/16" (1.75 mm).



1. Secure the side tracks to the wall with screws, tape or glue.



2. Slide the clips into place.



3. Snap the profiles (face or insert) into the clips in the side tracks. Note: Insert the sign material before snapping profiles into place.



4. Screw the side track caps into place from the top and the bottom.