



**CLEARPATH**  
SIGNAGE SYSTEMS.

# LuminEssence™

Add a burst of brilliance to your next project with ClearPath's LuminEssence™ product line.

This line features rich patterns and a glossy finish that complement a variety of signage applications. LuminEssence™ is also well-suited for projects using direct lighting sources, such as halogen lighting fixtures, to give a brilliant, illuminating effect.

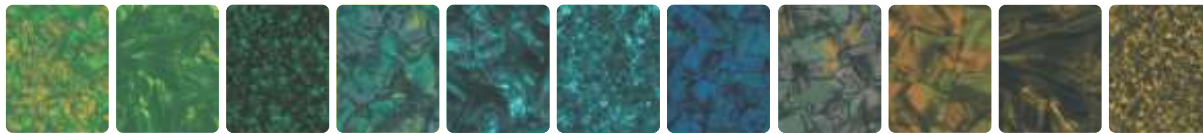
LuminEssence™ offers the perfect accent solution for not only a sign layout, but also a point-of-purchase display or any interior space. It is available in 21 distinct color combinations and three different patterns (Reflection, Marble and Crystalline).

## General Product Specifications

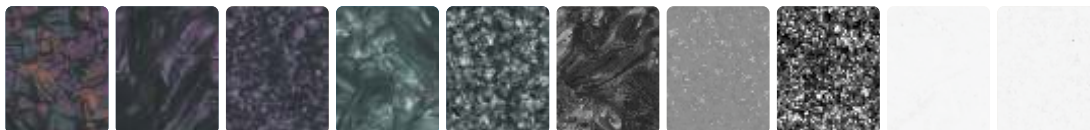
Material: Single-ply PVC sheet material

Gauge: .027" (.68mm)

Sheet Size: 24.25" x 48.25" (616 mm x 1,225.6 mm)



<b>LE412-994</b> Peridot Reflection	<b>LE412-984</b> Peridot Marble	<b>LE412-974</b> Peridot Crystalline	<b>LE412-964</b> Rainforest Reflection	<b>LE412-944</b> Aquamarine Marble	<b>LE412-954</b> Aquamarine Crystalline	<b>LE412-564</b> Sapphire Reflection	<b>LE412-874</b> Juniper Reflection	<b>LE412-614</b> Amber Reflection	<b>LE412-634</b> Amber Marble	<b>LE412-624</b> Amber Crystalline
-------------------------------------------	---------------------------------------	--------------------------------------------	----------------------------------------------	------------------------------------------	-----------------------------------------------	--------------------------------------------	-------------------------------------------	-----------------------------------------	-------------------------------------	------------------------------------------



<b>LE412-584</b> Amethyst Reflection	<b>LE412-554</b> Amethyst Marble	<b>LE412-594</b> Amethyst Crystalline	<b>LE412-424</b> Tanzanite Marble	<b>LE412-384</b> Tanzanite Crystalline	<b>LE412-414</b> Obsidian Marble	<b>LE412-332</b> Agate Crystalline	<b>LE412-434</b> Onyx Crystalline	<b>LE412-242</b> Opal Marble	<b>LE412-212</b> Opal Crystalline
--------------------------------------------	----------------------------------------	---------------------------------------------	-----------------------------------------	----------------------------------------------	----------------------------------------	------------------------------------------	-----------------------------------------	------------------------------------	-----------------------------------------

## Construction

The LuminEssence™ product line is constructed using a PVC cap and core. Different patterns are applied between the cap and the core to produce the desired color/pattern combination for that particular product.

## Cutting:

LuminEssence™ can be cut using tools normally found in workshops such as guillotines, shears and circular or band saws. It can also be cut using a router or engraver if specific shapes are needed. DO NOT laser cut the material.



For more information, visit [www.clear-path.com](http://www.clear-path.com).